

Sheldon School

Open Evening June 2024



Welcome



Sheldon School

BE KIND | BE BRAVE | BE THE BEST YOU

'One child, one teacher, one book, one pen can change the World.'

Malala Yousafzai



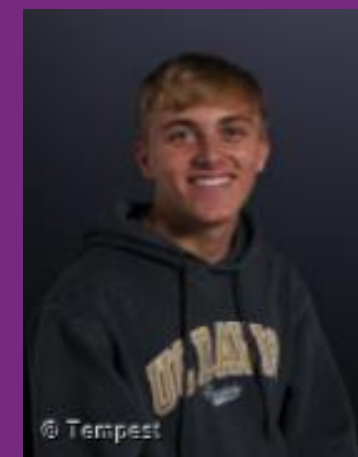
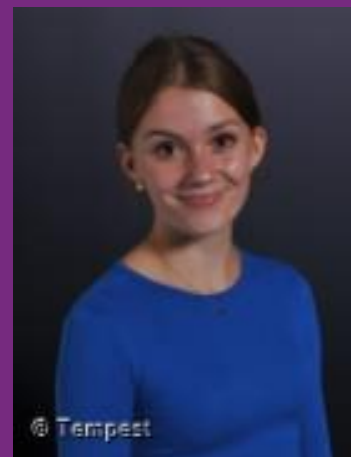
Meet the family!



Headteacher
Peter Lynch



Enya Collins and Rojus Balandis
Year 7 students



Eloise Preater and Josh Edwards
Sixth Form Presidents

Tonight

- Find out about Sheldon
- Listen to the Headteacher
- See the school
- Meet pupils and staff
- Ask questions



Important decision to make

- Choosing the right school to meet your child's and family's needs
- Ensuring the '**ethos**' and '**values**' of the school aligns with your own
- Getting a **feel** for the school from meeting students and staff tonight



Our School Vision

“To provide high-quality education, enrichment and pastoral care that improves the life chances of all students.”



‘Every child deserves a champion - an adult who will never give up on them.’

Rita Pierson

Mission statement

- Sheldon school is a family, where **high quality relationships** are at the heart of everything we do. We ensure that all students **feel safe and cared for**.
- We aim to ensure **that every student can thrive** regardless of social background, academic ability or special educational need.
- We recognise that **education is more than what happens in the classroom** and are rightly proud of the experiences students will receive through our extra- curricular offer, trips and visits.



Sheldon School

BE KIND | BE BRAVE | BE THE BEST YOU

Mission statement

- We pride ourselves on having **the highest expectations** of all students and staff.
- We are **passionate about working together** with parents and our wider community to ensure success for all our pupils.
- We are **kind, brave and try our best** at all times.



Sheldon School

BE KIND | BE BRAVE | BE THE BEST YOU



**BE
KIND**

**BE
BRAVE**

**BE THE
BEST YOU**

Be Kind

... we are thoughtful and considerate about how we treat ourselves and others. We always have good manners and we show gratitude towards others.

Be Brave

... we are confident and resilient learners who contribute fully. We don't make excuses and we accept that we make mistakes, but we learn from them.

Be the Best you

....we give 100% each and every day to be the best we can be. We believe that success comes through hard work.

Pastoral Care

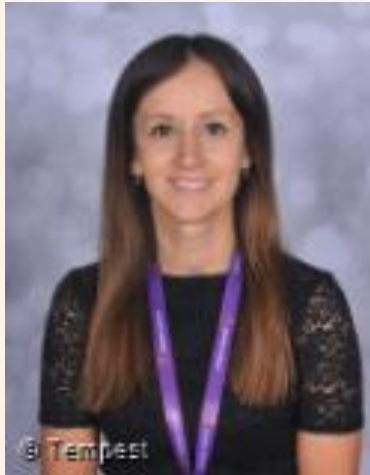
- Tutors and one to one meetings
- Non teaching pastoral leaders
- Student support services
- A experience Safeguarding team
- Full-time school counsellor and counselling services
- Peer mentoring
- Behaviour and Learning support teams
- Alternative provision
- SEND key workers scheme



Sheldon School

BE KIND | BE BRAVE | BE THE BEST YOU

Pastoral Care



Miss Owen
Head of Year



Mrs Avent
Deputy Head of Year



Mrs Crouch
Pastoral Lead

What do they do:

- Support students with any pastoral issues
- Celebrate successes
- Monitor behaviour & sanctions
- Liaise with parents/carers



Sheldon School

BE KIND | BE BRAVE | BE THE BEST YOU

The role of tutor



What do they do:

- Deal with the day to day issues
- First point of call for parents and students
- One to one meetings
- Follow them through Yr7-11



Sheldon School

BE KIND | BE BRAVE | BE THE BEST YOU



Good Ofsted report April 2024

Sheldon School's most recent Ofsted inspection praised the behaviour and conduct of the students and the purposeful ethos of pupils in lessons. The pupils report that they feel part of the Sheldon community.

Students describe their learning as 'scholarly.' They are well prepared to take the next steps into higher education, apprenticeships or other training.

Throughout the whole school, teachers ensure their practices are highly inclusive... This is the culture of the school.

The school has high expectations of pupils and all students are encouraged to be the best.

Pupils relish their roles as subject ambassadors and prefects.

Curriculum

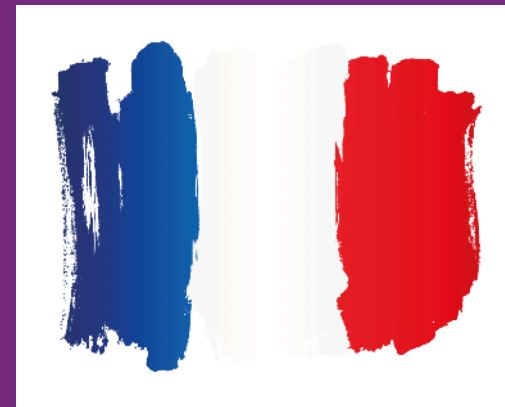
“Pupils develop their interests and talents through the many clubs available to them. Pupils are very positive about the range of activities that they can take part in..”



“You have established a school that holds the academic success and emotional wellbeing of each pupil at its heart.”

Languages

“Pupils’ engagement in learning is strong.”



“The curriculum is ambitious for all pupils, including those with special educational needs and/or disabilities (SEND).”

Extra curricular opportunities

After School Clubs at Sheldon

Monday

Orchestra – All Years
A1, 3pm-4pm
Music Tech Club (every other week)
A2, 3pm-4pm
Badminton – All Years
Sports Hall, 3pm-4pm

Tuesday

Whole School Show – All Years
A3/Hall, 3pm-4:30pm
Sheldon Singers – Year 7-11
A1, 3pm-4pm
KS4/KS5 Art & Photography – Years 10-13
A4/A5/A6, 3pm-4pm
Learn to Crochet – All Years
A1, 3pm-3:50pm
Classics Club – Year 7-9 (Ovid competition for Y7-8)
E2, 3pm-4pm
KS4 Chemistry Club – Year 10-11
S6, 3pm-4pm
LEGO Masters/Robotics – Year 7-8
S3, 3pm-4pm
Netball – Year 7
Courts, 3pm-4:15pm
Hockey – Year 10-11
Astro, 3pm-4:15pm
Rugby – Year 7-8
Field, 3pm-4pm

Wednesday

Whole School Show – All Years
A3/Hall, 3pm-4:30pm
KS3 Art Club – Year 7-9
A4, 3pm-4pm
KS3 Science Club – Year 7-9
S4, 3:15pm-4:15pm
Allotment Club – All Years
Allotments, 3pm-4pm
Netball Club – Year 10-11
Courts, 3pm-4:15pm *Specific dates
Girls' Football
Field, 3pm-4:15pm

Thursday

Whole School Show – All Years
A3/Hall, 3pm-4:30pm
Dance Club – Year 7-8
A9, 3:10pm-4pm
KS4/KS5 Art & Photography – Years 10-13
A4/A5/A6, 3pm-4pm
The Sheldonian Student Newspaper – All Years
E7, 3pm-4pm
Netball Club – Year 8-9
Courts, 3pm-4:15pm
Rugby – Year 9-11
Field, 3pm-4pm

Lunchtime Clubs at Sheldon

Monday

Pokemon, Play and Trade – Year 7-9
Behaviour Support, 12:30pm-1pm

Tuesday

Reptile Club – Year 7
S2, 12:20pm-12:40pm
Flute Group – All Years (approx gd1+)
A2, 12:30pm-1pm
Puzzle Club – All Years
M1, 12:30pm-1pm

Wednesday

Ukulele Club – All Years
A2, 12:20pm-1pm
Chess Club – All Years
Library, 12:20pm-12:55pm

Thursday

Brass Group – All Years
A2, 12:20pm-1pm
Board Games – All Years
Library, 12:20pm-12:50pm

Friday

Christian Union – All Years
A11, 12:20pm-12:50pm
Wellbeing Club – Year 7
P4, 12:20pm-12:55pm
Sixth Form Investment Club – Year 12-13
C4, 12:20pm-12:50pm



Sheldon School

Allotment Club



Tickets £6 / £4 (concession)
Available Via Parent Pay

11, 12, 13 December 2023
Curtains Up @ 6:30pm
Sheldon School Hall



Tickets Going Fast!

Happy



Sheldon School
BE KIND | BE BRAVE | BE THE BEST YOU

World Book Day 2024



Sheldon School
BE KIND | BE BRAVE | BE THE BEST YOU

Leavers' Day 2024



Sheldon School
BE KIND | BE BRAVE | BE THE BEST YOU

World Book Day 2024



Sheldon School
BE KIND | BE BRAVE | BE THE BEST YOU

Y9 German
Osterbaum



Sheldon School
BE KIND | BE BRAVE | BE THE BEST YOU

Sports Ambassadors



2024
Young Musician
of the Year
Winner, Lower School

Sheldon School
BE KIND | BE BRAVE | BE THE BEST YOU



Sheldon School
BE KIND | BE BRAVE | BE THE BEST YOU

Year 8 Achievers Assembly



Student leadership opportunities



Sheldon School
BE KIND BE BRAVE BE THE BEST YOU

Year 9
Flying Start Challenge

Trips and visits



Sheldon School
BE KIND | BE BRAVE | BE THE BEST YOU

DofE Silver Award



Sheldon School
BE KIND | BE BRAVE | BE THE BEST YOU

Sheldon Students
Opportunity Fund

SD
COMPANY



Sheldon School
BE KIND | BE BRAVE | BE THE BEST YOU

Y8 Germany Trip



Sheldon School
BE KIND | BE BRAVE | BE THE BEST YOU

Ski Trip 2024



Sheldon School
BE KIND | BE BRAVE | BE THE BEST YOU

Geography Trip 2024



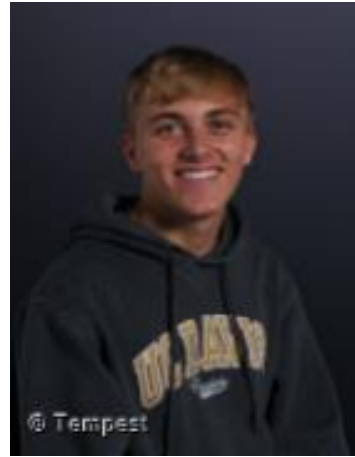
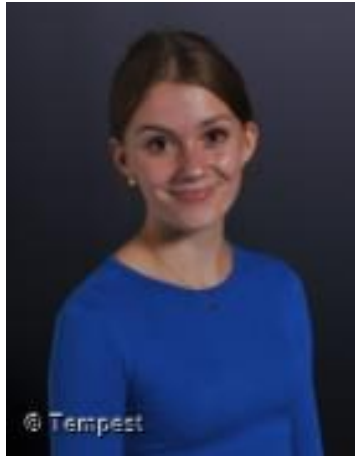
Sheldon School
BE KIND | BE BRAVE | BE THE BEST YOU

Ten Tors 2024



Sheldon School
BE KIND | BE BRAVE | BE THE BEST YOU

Y10-Y13 Textiles Trip



Eloise Preater and Josh Edwards
Sixth Form Presidents

Enya Collins and Rojus Balandis
Year 7 students

Meet the students

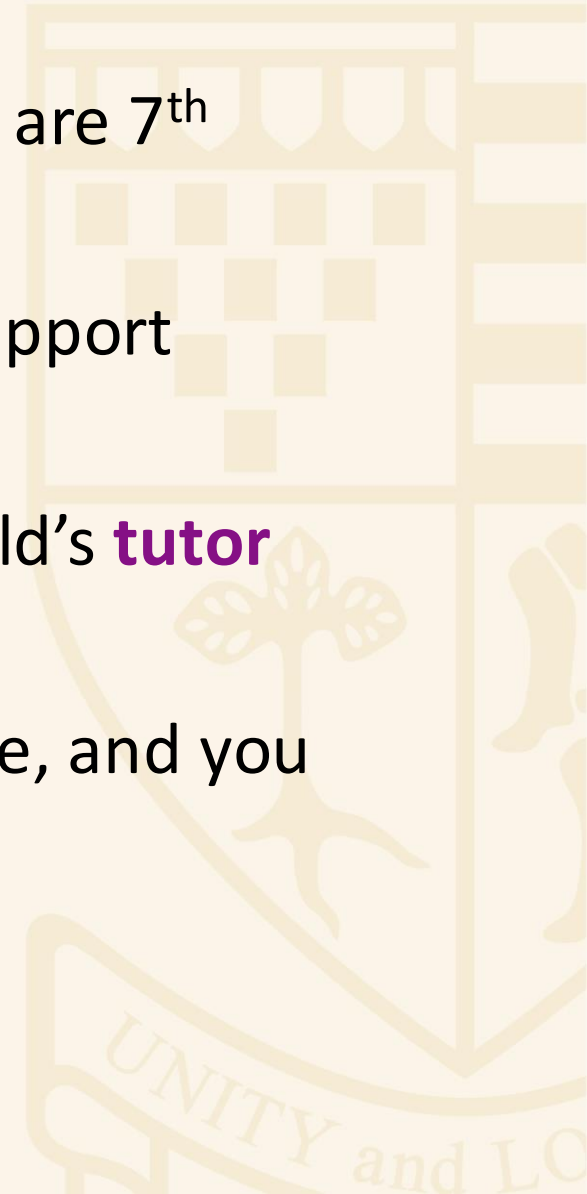
Induction

- Sheldon School has **two days of transition** in Term 6, which are 7th and 8th July 2025.
- **Year 11 Prefects** are paired up with tutor groups and will support students throughout transition period and Year 7.
- Transition Days are an opportunity for you to meet your child's **tutor** and the other members of your **tutor group**.
- You will also get to know where places are on the school site, and you will attend a selection of **lessons**.



Sheldon School

BE KIND | BE BRAVE | BE THE BEST YOU



Transition Days: 7th – 8th July 2025



“The induction programme for the new Year 7s is outstanding. My child enjoyed an anxious free summer and couldn’t wait to start in September. The camp further cemented new relationships.”





Sheldon School

BE KIND | BE BRAVE | BE THE BEST YOU

[HOME](#)

[ADMISSIONS](#)

[NEWS](#)

[OUR COMMUNITY](#)

[INFORMATION](#)

[CURRICULUM](#)

[CONTACT](#)

[CALENDAR](#)

[LETTINGS](#)

[VACANCIES](#)

[SIXTH FORM](#)



WELCOME TO SHELDON SCHOOL

BE KIND, BE BRAVE, BE THE BEST YOU

↓ SCROLL DOWN TO DISCOVER MORE

For the attention of all parents

Will your child be transferring
to a secondary school in
September 2025

You must apply for a secondary school place

Apply online at **wiltshire.gov.uk** or
complete an application form, available at
all Wiltshire Council offices.

The deadline for applications is

12 midnight, 31 October 2024

All forms must be returned to the school admissions
team at County Hall, Trowbridge, Wiltshire.

Contact customer services on **01225 713010**

For more information or to request our guide
to finding a secondary school place in Wiltshire.

Use ALL preferences – in
the order of preference

Outside the Wiltshire
area?

Notification –
1st March 2025



**Deputy
Headteacher
Dr Alison
Simpson**



**Assistant
Headteacher
Mr Eugene
Spiers**



**Deputy
Headteacher
Mr Andy
Symes**



**Assistant
Headteacher
Mr Jon
Scourfield**



**Assistant
Headteacher
Miss Sian
Mundy**



**Assistant
Headteacher
Mr John
Rumble**



Sheldon School

BE KIND | BE BRAVE | BE THE BEST YOU

**Thank you for coming.
We hope you enjoy your evening**

Facilities

“There is a strong focus on supporting pupils’ wider development.”



Surroundings



